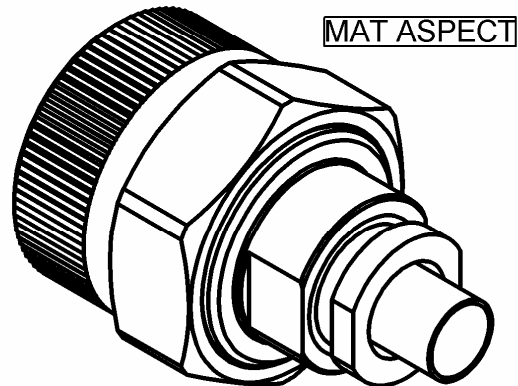
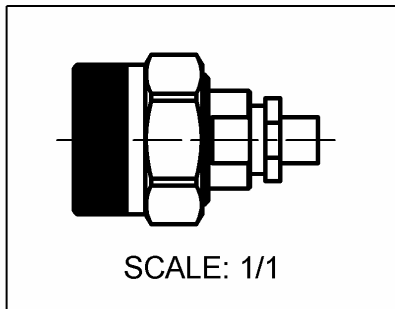
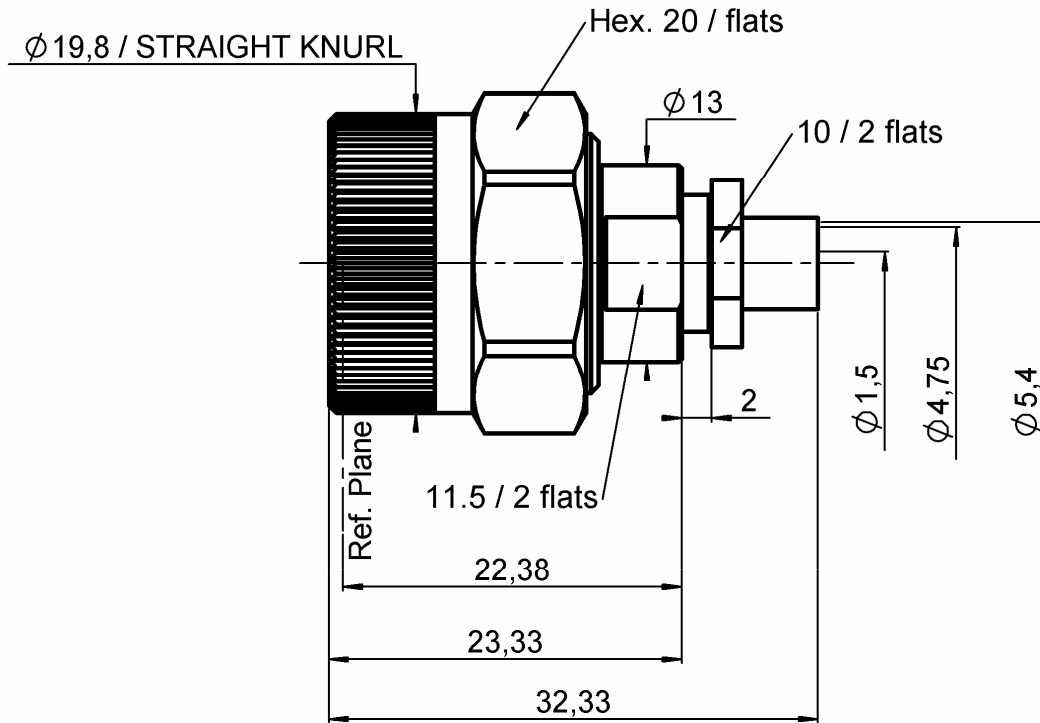


**STRAIGHT PLUG SOLDER TYPE**

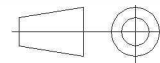
**R163.065.L02**

**CABLE SHF 5+5M**

Series : N-18



All dimensions are in mm.



| COMPONENTS     | MATERIALS                | PLATING ( $\mu\text{m}$ ) |
|----------------|--------------------------|---------------------------|
| BODY           | STAINLESS STEEL (316L)   | PASSIVATED .              |
| CENTER CONTACT | BRASS                    | GOLD 1.3 OVER NICKEL 2    |
| OUTER CONTACT  | -                        | -                         |
| INSULATOR      | PTFE                     | -                         |
| GASKET         | FLUOROSILICON            | -                         |
| OTHERS PARTS   | ST. STEEL (316L) , BRASS | GOLD , PASSIVATED         |
| -              | -                        | -                         |
| -              | -                        | -                         |

Issue : 0648 A

In the effort to improve our products, we reserve the right to make changes judged to be necessary.



**RADIALL**®

**STRAIGHT PLUG SOLDER TYPE**

**R163.065.L02**

**CABLE SHF 5+5M**

Series : N-18

**PACKAGING**

| Standard | Unit | Other             |
|----------|------|-------------------|
| <b>1</b> | -    | <b>Contact us</b> |

**SPECIFICATION**

**ELECTRICAL CHARACTERISTICS**

|                                 |               |                             |
|---------------------------------|---------------|-----------------------------|
| Impedance                       |               | <b>50</b> Ω                 |
| Frequency                       |               | <b>0-18</b> GHz             |
| VSWR                            | <b>1.12 +</b> | <b>0,0000</b> x F(GHz) Maxi |
| Insertion loss                  |               | <b>0.12</b> √F(GHz) dB Maxi |
| RF leakage                      | - (           | <b>90</b> - F(GHz)) dB Maxi |
| Voltage rating                  |               | <b>500</b> Veff Maxi        |
| Dielectric withstanding voltage |               | <b>1500</b> Veff mini       |
| Insulation resistance           |               | <b>5000</b> MΩ mini         |

**CABLE ASSEMBLY**

| Stripping | a    | b    | c    | d    | e    | f    |
|-----------|------|------|------|------|------|------|
| mm        | 19,0 | 4,80 | 0,00 | 0,00 | 0,00 | 0,00 |

Assembly instruction :

Recommended cable(s)  
SHF 5M  
SHF 5

Characteristics indicated on this data sheet are those that can be achieved with the highest performance cable. Intrinsic limitations of the cable may diminish the performance of the assembly

Cable retention

- pull off \* N mini  
- torque NA N.cm

**MECHANICAL CHARACTERISTICS**

|                            |           |           |
|----------------------------|-----------|-----------|
| Center contact retention   |           |           |
| Axial force – Mating end   | <b>27</b> | N mini    |
| Axial force – Opposite end | <b>27</b> | N mini    |
| Torque                     | NA        | N.cm mini |

**TOOLING**

| Part Number | Description | Hexagon |
|-------------|-------------|---------|
| .           | .           | .       |

|                    |                |      |
|--------------------|----------------|------|
| Recommended torque |                |      |
| Mating             | <b>400</b>     | N.cm |
| Panel nut          | NA             | N.cm |
| Clamp nut          | <b>350</b>     | N.cm |
| A/F clamp nut      | <b>10,0000</b> | mm   |

**OTHER CHARACTERISTICS**

\*See the TDS cable assembly

|             |                |             |
|-------------|----------------|-------------|
| Mating life | <b>500</b>     | Cycles mini |
| Weight      | <b>32,5000</b> | g           |

**ENVIRONMENTAL**

|                       |                 |           |
|-----------------------|-----------------|-----------|
| Operating temperature | <b>-65/+165</b> | °C        |
| Hermetic seal         | NA              | Atm.cm3/s |
| Panel leakage         | <b>IP67</b>     |           |

Issue : 0648 A

In the effort to improve our products, we reserve the right to make changes judged to be necessary.



**STRAIGHT PLUG SOLDER TYPE**

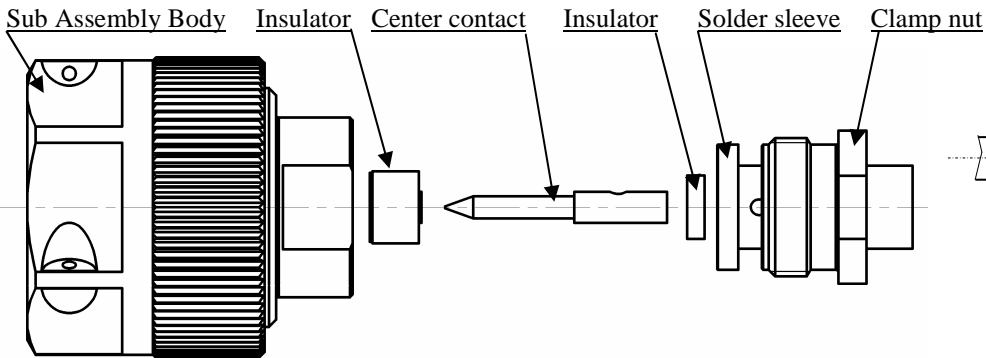
**R163.065.L02**

**CABLE SHF 5+5M**

Series : N-18

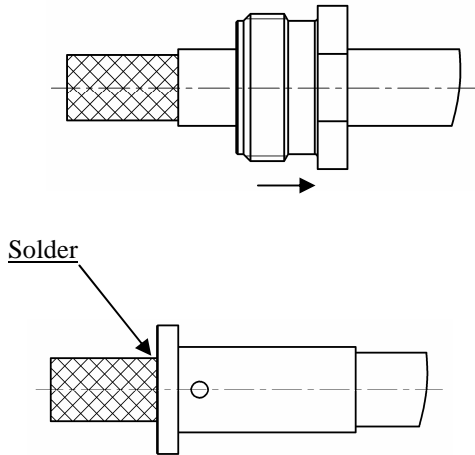
**COMPONENTS**

**STRIPPING DIMENSIONS**



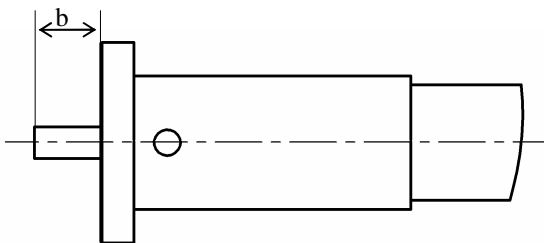
1

Strip the cable.  
Slide the clamp nut onto the cable.  
Solder the ferrule onto the braid of the cable.



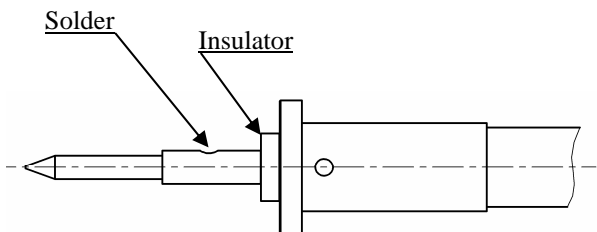
2

Cut the excess of braid and dielectric leveled on the sleeve.



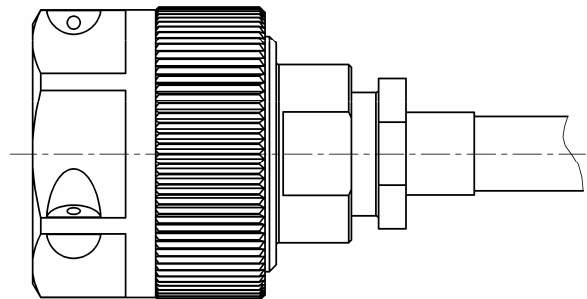
3

Slide the center contact onto the cable inserting between contact and ferrule, the insulator.  
Solder the contact onto the inner conductor.



4

Mount the whole body into the main sub assembly and screw the solder sleeve.  
(recommended coupling torque 350 N/cm)



Issue : 0648 A

In the effort to improve our products, we reserve the right to make changes judged to be necessary.

